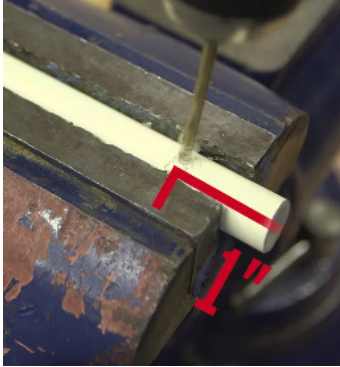




# Ripcord Chopper



## 1. Drill holes.

Drill a hole through the PVC pipe one inch away from the end. » Now drill a hole through the wooden dowel at its center. The hole should be just large enough for the string to fit through.

## Supplies

6" of PVC pipe

7" long wooden dowel that can fit inside the PVC pipe

Sponge emery board

String

Glue

Drill



## 2. Attach the dowel.

Cut a hole into the middle of the sponge emery board that is large enough for the dowel to fit through. » Secure it to the emery board with glue.



## 3. Bend the board.

Once the glue is dry, bend the ends of the emery board in opposite directions as seen in the photo. » Insert the dowel into the PVC pipe.



## 4. Add the string.

Thread the string through the hole that you drilled in the PVC pipe and then through the hole that you drilled in the dowel (see picture). » Turn the dowel so that the string winds around it until there is a small piece left hanging out of the PVC pipe. » Hold the pipe vertically and pull the string out as hard as you can! » If your chopper doesn't fly away, then try turning the dowel in the opposite direction when you wind up the string.

