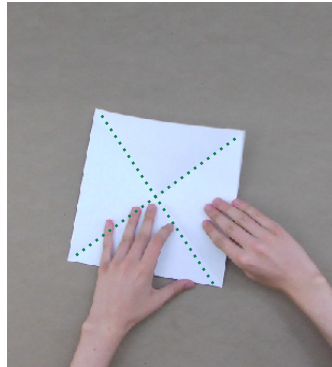
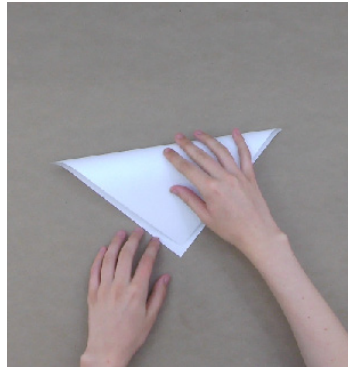


# Origami Pinwheel



## 1. Make some folds.

Fold and unfold the square piece of paper in half diagonally so that it forms an X. » Unfold everything.

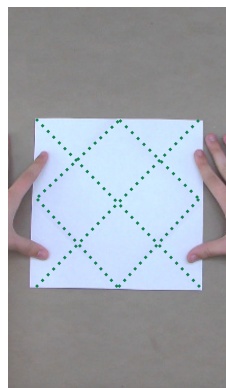
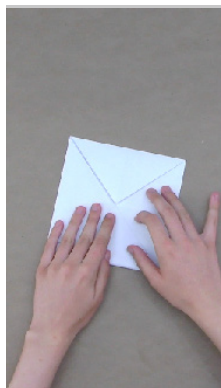
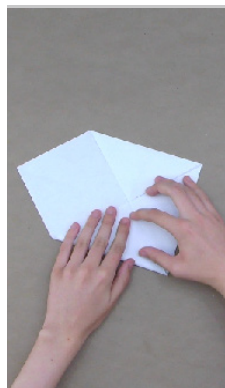
## Supplies

Square piece of paper

Bamboo Skewer

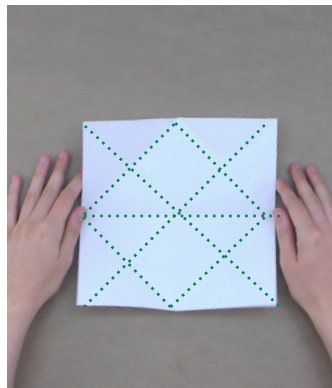
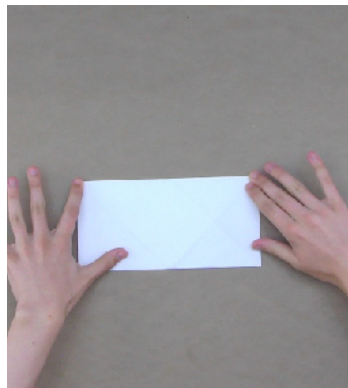
Cork

Pushpin



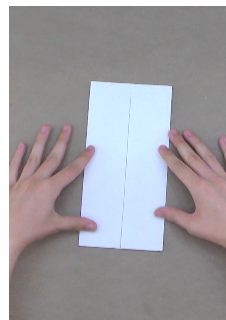
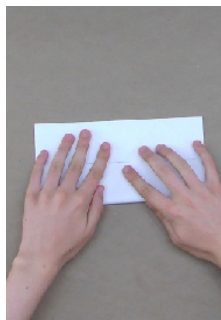
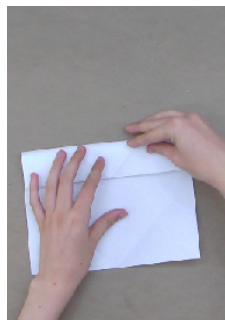
## 2. Make more folds!

Fold all four corners of the square to the center. » Unfold everything.



## 3. Make even more folds!

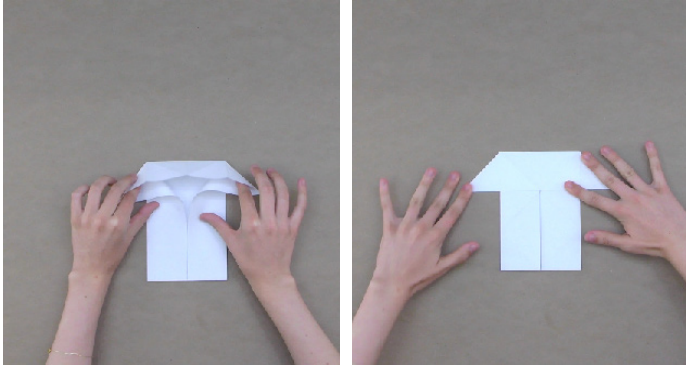
Fold the square in half (not diagonally). » Unfold everything. » Orient your square so that the line you just created is horizontal.



**4. You guessed it... more folds.** Fold the top and bottom edges of the paper to the horizontal line. » Do not unfold this! » Rotate your paper so that it is oriented vertically.

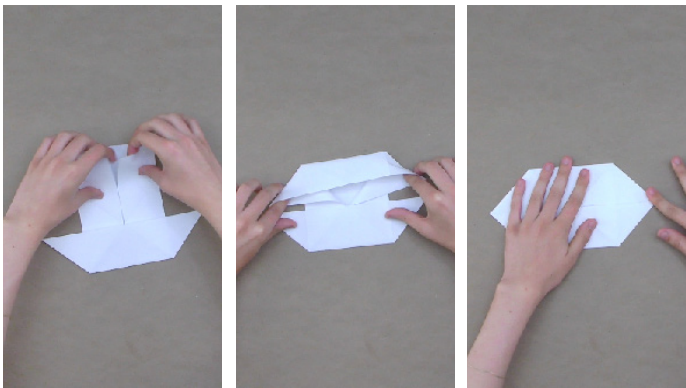


# Origami Pinwheel, continued



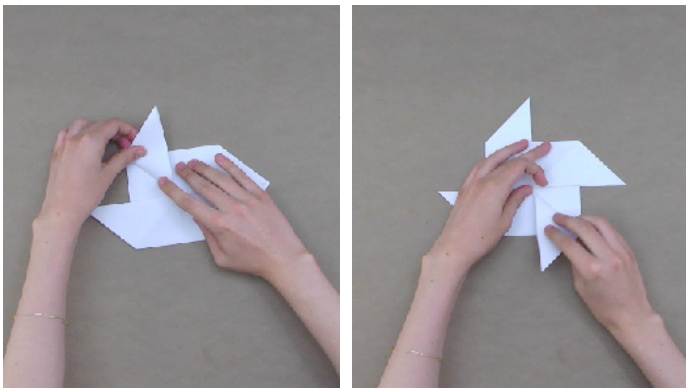
## 5. Almost done folding!

Grab the corners at the top that meet in the center and pull them down and out until they meet the horizontal center of the paper. » The folded paper should now resemble a house.



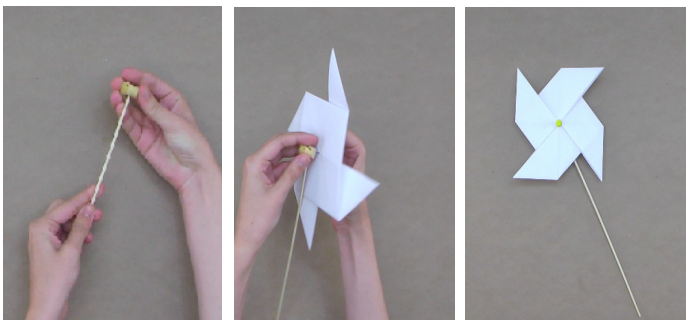
## 6. Repeat the previous step.

Rotate the paper upside down and repeat the same fold that you just made. » The folded paper should now resemble a hexagon.



## 7. Make the last folds!

Take the top left flap and fold it up towards the center. » Take the bottom right flap and fold it down towards the center.



## 8. Put it all together.

Push the pointed end of the bamboo skewer into the cork. » Center your pinwheel over the face of the cork and secure it by pushing the push pin through the center. Don't push it all the way in! » Wiggle the pinwheel just a little bit to enlarge the hole and give it more room to spin. » Test your new pinwheel by blowing on it.

